



FIRSTLIGHTTRAVEL



Your South Pacific Travel Specialists

New Zealand **Coach Holidays** 2025 / 26



20 Seat Business Class or 32 Seat Premium Economy

Valid for Departures September 2025 - May 2026. New Zealand Dollars (NZD)

Visit the South Island in ultimate style with like-minded travellers

11 Day Ultimate South Island SOLO Travellers

No hidden extras



TOUR CODE UGPSO11

STYLE Ultimate Small Group
COACH 20 seat Business Class
ACCOMMODATION 4.5 star

STARTS Christchurch
FINISHES Christchurch

GUARANTEED DEPARTURES

2025	2026
Sep 21	Jan 7

SEASONAL OFFER Save \$250 pp on highlighted departure date.

ALL INCLUSIVE TOUR PRICE GUARANTEED SINGLE ROOM

Tour includes transfers in New Zealand, Business Class 20 seat coach travel, 4.5 star accommodation, most meals, sightseeing, attractions and a range of VIP extras.

NZ\$, LAND ONLY, GUARANTEED SINGLE ROOM

PREPAID ATTRACTIONS

- International Antarctic Centre
- TranzAlpine Rail Journey
- Cruise Lake Wakatipu on the TSS Earnslaw
- Lakes District Museum
- Milford Sound Cruise and Lunch
- Larnach Castle*
- City Sightseeing tour of Christchurch and Dunedin

*Guided tour.

COACH FEATURES

- 20 Business Class seats on a full-size coach
- 2 door access; dedicated seat side storage with tray table; cup holder
- Restroom; daily onboard Wi-Fi allowance

EXPERIENCE

- Personalised Meet and Greet on arrival
- Return airport transfers in New Zealand
- Professional Coach Captain
- 10 nights 4.5 star accommodation
- 3 two night stays
- Hotel portage
- 1 rail journey
- 2 cruises
- All sightseeing and prepaid attractions
- Extensive Optional Activities
- Ultimate Documentation Pack

MEALS

- 10 cooked breakfasts
- 8 sumptuous dinners including complimentary pre-dinner drink at the Welcome Dinner and 2 specialty dinners: Walter Peak Homestead, Queenstown; Intimate Farewell Dinner, selected beverages, Christchurch
- 1 lunch: Milford Sound Cruise
- 1 Ultimate High Tea: Larnach Castle
- Enjoy GPT Hotel Wine Time (discounted drinks)

Day 1: Dinner not included for anyone arriving later than 8pm.

Itinerary and Hotels

(B) Breakfast. (L) Lunch. (D) Dinner. (SD) Specialty Dinner.

DAY 1: Arrive Christchurch (D)

On arrival into Christchurch you will be met and transferred to your hotel. This evening enjoy a complimentary pre-dinner drink as you meet your travelling companions.

Hotel Sudima Christchurch City (2 nights)

DAY 2: Christchurch (B)

This morning visit the International Antarctic Centre, designed to provide an informative account of life in Antarctica. Feel the chill of the Antarctic storm room, take a ride on the Hagglund all-terrain vehicle, see the little blue penguins and be astonished within the immersive 4D theatre. This is followed by a city tour of Christchurch. The remainder of the afternoon and evening is at leisure to explore further.

DAY 3: Christchurch - Arthur's Pass - Franz Josef (B,D)

This morning board the TranzAlpine, renowned as one of the great train journeys of the world. Travel over massive viaducts, river valleys and spectacular gorges as you ascend to Arthur's Pass located in the centre of the Southern Alps. Board your Ultimate Coach and travel to Hokitika, famous for its Greenstone before continuing

to the township of Franz Josef where time is available to experience a scenic flight (optional, weather permitting) over the spectacular glaciers.

Hotel Te Waonui Forest Retreat

DAY 4: Franz Josef - Queenstown (B)

See the snow-capped peaks of the Southern Alps as you travel south along the West Coast. Continue via the Haast Pass, an area of stunning beauty before arriving into picturesque Queenstown, a year-round resort situated on the shores of magical Lake Wakatipu. This evening is at leisure, you may choose to dine out at one of the many fine restaurants.

Hotel Rendezvous Heritage Queenstown (2 nights)

DAY 5: Queenstown (Free Day) (B,SD)

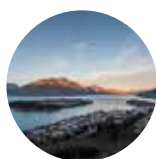
Today is a free day for you to explore Queenstown with many optional activities available. You may wish to enjoy the thrill of a jet boat ride or a heritage tour of the scenic Skippers Canyon. This evening board the vintage steamship TSS Earnslaw and cruise across Lake Wakatipu to Walter Peak Station. Sit back, relax and enjoy a delicious gourmet barbecue dinner





Meet like-minded people and make lifelong friends.

Optional Activities



BEST OF QUEENSTOWN

During this half-day touring experience you will be captivated by breathtaking views of Queenstown. Explore Arrowtown, sample delightful local wines and cheeses and enjoy on a private boat cruise on Lake Wakatipu.



SPEIGHTS BREWERY

Explore 141 years of brewing history on a guided tour. Discover the ingredients used and witness the state-of-the-art brewing process used today. Guided tasting included.

featuring a menu of seasonal, fresh and locally sourced food at the Colonel's Homestead. After dinner enjoy a short farm tour then reboard the TSS Earnslaw for a sing along by the piano as you cruise back to Queenstown.

DAY 6: Queenstown - Te Anau (B,D)

Enjoy a leisurely start this morning before travelling to Arrowtown, an old gold mining village where you visit the Lakes District Museum. This innovative museum is heavily involved in the protection of the historic buildings scattered around town. Continue to Te Anau, the gateway to Fiordland. Today you may like to visit the Te Anau Glowworm Caves (optional).

Hotel Distinction Te Anau Hotel & Villas (2 nights)

DAY 7: Te Anau - Milford Sound - Te Anau (B,L,D)

Depart Te Anau for a fascinating drive to Milford Sound where you board your launch for a cruise on this magnificent fiord. See the spectacular Bowen Falls and towering Mitre Peak as you enjoy lunch onboard. This afternoon return to Te Anau where some free time is available. You might like

to cap off your Fiordland experience by watching the breathtaking film, Ata Whenua - Shadowland, which screens at the Fiordland Cinema (optional).

DAY 8: Te Anau - Dunedin (B,D)

Travel via Gore and Balclutha to Dunedin known as the 'Edinburgh of the South' and enjoy a city tour. Travel along the Otago Peninsula to Larnach Castle where you will hear of the tragic and scandalous history on a guided tour. Enjoy time to wander around this Garden of International Significance and a delicious Ultimate High Tea served in the Grand Ballroom.

Hotel Distinction Dunedin Hotel

DAY 9: Dunedin - Mt Cook (B,D)

Farewell Dunedin and travel to Oamaru famous for its limestone. Follow the Waitaki River and see Lake Benmore as you travel to Mt Cook, New Zealand's highest peak.

Hotel The Hermitage Hotel

DAY 10: Mt Cook - Christchurch (B,SD)

This morning marvel at Mt Cook, New Zealand's highest peak. The opportunity is available to enjoy a scenic flight (optional, weather permitting) over the Southern Alps.

Continue to Lake Tekapo and view the brilliant turquoise water, the Church of the Good Shepherd and the Sheep Dog Statue before arriving into Christchurch. This evening enjoy a farewell dinner including selected beverages with your newfound friends.

Hotel Sudima Christchurch City

DAY 11: Depart Christchurch (B)

Time to say goodbye. You will be transferred to the airport for your flight home after a memorable New Zealand holiday.