



FIRSTLIGHTTRAVEL



Your South Pacific Travel Specialists

New Zealand **Coach Holidays** 2024 / 25



20 Seat Business Class or 32 Seat Premium Economy

Valid for Departures September 2024 - May 2025. New Zealand Dollars (NZD)

Enjoy authentic experiences of New Zealand's North Island

9 Day Signature North Island

No hidden extras

PREPAID ATTRACTIONS

- Kauri Museum
- Waitangi Treaty Grounds
- Hole in the Rock Dolphin Cruise
- Sky Tower
- Hobbiton™ Movie Set Tour and Lunch*
- Skyline Rotorua Gondola and Luge Ride
- Agrodome
- Thermal mud pools and geysers*
- Te Puia traditional Māori Hāngi and Concert
- Te Papa, NZ's National Museum
- City sights tour of Auckland, Napier, Wellington

*Guided tour.

COACH FEATURES

- 32 Premium Economy Comfort seats on a full-size coach
- 2 door access; seat back tray table; cup holder
- Restroom; daily onboard Wi-Fi allowance

EXPERIENCE

- Personalised Meet and Greet on arrival
- Return airport transfers in New Zealand
- Professional Coach Captain
- Tour Leader
- 8 nights 4 star accommodation
- 2 two night stays
- Hotel portorage
- 1 cruise
- All sightseeing and prepaid attractions
- Extensive Optional Activities
- Signature Documentation Pack

MEALS

- 8 cooked breakfasts
- 6 sumptuous dinners including complimentary pre-dinner drink at the Welcome Dinner and 2 specialty dinners: Māori Hāngi and Concert, Rotorua; Farewell Dinner including pre-dinner drink, Wellington
- 1 lunch: Hobbiton, Shire's buffet
- Enjoy GPT Hotel Wine Time (discounted drinks)

Day 1: Dinner not included for anyone arriving later than 8pm.



TOUR CODE SGPNI9

STYLE Signature Mid-Size Group
COACH 32 seat Premium Economy
ACCOMMODATION 4 star

STARTS Auckland
FINISHES Wellington

GUARANTEED DEPARTURES

2024	2025
Sep 8	Mar 11
Nov 18	May 18

SEASONAL OFFER Save \$200 pp on highlighted departure dates.



Itinerary and Hotels

(B) Breakfast. (L) Lunch. (D) Dinner. (SD) Specialty Dinner.

DAY 1: Arrive Auckland (D)

On arrival into Auckland, you will be met by a Grand Pacific Tours representative and transferred to your hotel. This evening enjoy a complimentary pre-dinner drink when you meet your Tour Leader and travelling companions for dinner.

Hotel SkyCity Hotel

DAY 2: Auckland - Bay of Islands (B,D)

Depart Auckland and travel to Matakohē for a visit and informative talk at the Kauri Museum. Travel via Whangarei to Paihia, situated in the heart of the beautiful Bay of Islands. Enjoy a guided tour of the Waitangi Treaty Grounds, the location of the signing of the treaty between the Māori tribes and the British Government in 1840.

Hotel Scenic Hotel Bay of Islands (2 nights)

DAY 3: Bay of Islands (Free Day) (B)

Today is a free day. Choose from the many optional activities available, including the Cape Reinga coach trip via Ninety Mile Beach or a spectacular scenic flight. This evening is also free, you may like to enjoy a relaxing dinner cruise (optional).

DAY 4: Bay of Islands - Auckland (B)

This morning cruise through the beautiful Bay of Islands aboard a luxury catamaran to Cape Brett, where a historic lighthouse keeps watch over Piercy Island, or as it is popularly known, the 'Hole in the Rock'. Keep an eye out for dolphins and other marine life. Return to Paihia and travel south via Whangarei to Auckland where you will enjoy a city sights tour. This evening is free to explore the many eateries surrounding your hotel.

Hotel SkyCity Hotel

DAY 5: Auckland - Rotorua (B,L,D)

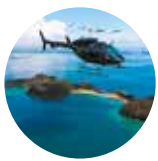
Enjoy a leisurely start before visiting Sky Tower, one of New Zealand's most spectacular attractions. Depart Auckland and travel through the picturesque countryside to Hobbiton for a buffet lunch. This is followed by a guided tour of the Movie Set from The Lord of the Rings and The Hobbit trilogies. Your guide will recount details of how this beautiful piece of farmland was transformed into The Shire from Middle Earth.

Hotel Pullman Rotorua (City View Room, 2 nights)



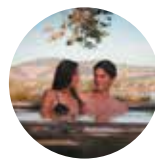
You will be immersed in the traditions and customs of Māori culture in Rotorua.

Optional Activities



SALT AIR

Fly by helicopter over the crystal-clear turquoise waters found in the world-famous Bay of Islands to the 'Hole in the Rock'. From above explore the townships of Russell, Paihia and Waitangi.



POLYNESIAN SPA

Whilst in Rotorua why not take the opportunity to relax in hot mineral spring pools at the Polynesian Spa, New Zealand's leading international spa. Choose from 27 hot pools and enjoy views over Lake Rotorua.

DAY 6: Rotorua (B,SD)

Today begins with a gondola ride and breakfast at Skyline Rotorua. There is also time for a thrilling luge ride! Next stop is the Agrodome for an action-packed hour of farming entertainment and education that is unlike anything you've seen before. Enjoy some free time this afternoon before travelling to Te Puia to see the boiling mud pools and awesome geysers that Rotorua is famous for. This evening experience an entertaining Māori Hāngi and Concert.

DAY 7: Rotorua - Napier - Masterton (B,D)

Depart Rotorua and travel along the Thermal Explorer Highway to Huka Falls and Lake Taupo. Continue to Napier known as 'The Art Deco Capital', where a city tour will showcase an impressive collection of art deco buildings. Enjoy some free time to explore the fascinating architecture before travelling through the Wairarapa, an emerging cool-climate wine region.

Hotel Copthorne Hotel & Resort Solway Park Wairarapa (Superior Room)

See the world-famous Farm Show at Agrodome starring a cast of talented animals.

DAY 8: Masterton - Greytown - Wellington (B,SD)

Enjoy a leisurely start before travelling to Greytown. Drive through the scenic Rimutaka Mountain Range into Wellington for a city tour of the nation's capital. A highlight this afternoon will be time to explore Gallipoli: A Scale of War exhibition at Te Papa, New Zealand's National Museum. Cutting edge technology brings these stories to life through the eyes of New Zealanders who found themselves in

extraordinary circumstances. This evening enjoy a pre-dinner drink and reminisce on memories shared with your new friends at the farewell dinner.

Hotel James Cook Hotel Grand Chancellor (Executive Room)

DAY 9: Depart Wellington (B)

Time to say goodbye. You will be transferred to the airport for your flight home after a memorable New Zealand holiday.

